

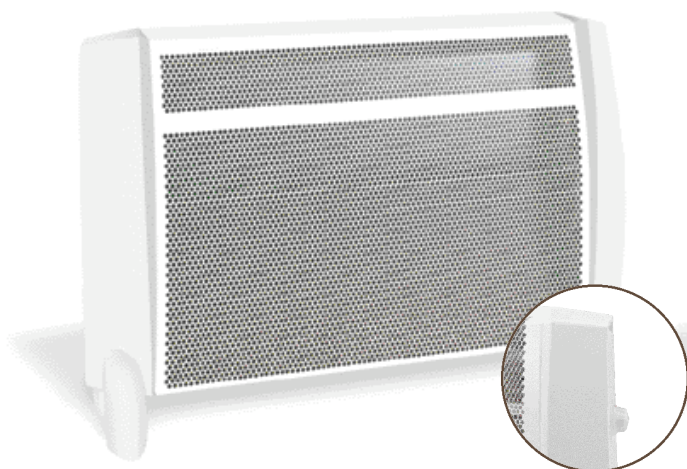


Technical data	PH1
Dimensions (H-L-D) in cm	44-66-13
Electronic temperature control	-
Tension - Power input	230V/1000W
Electrical protection	IP24, 
Ambient thermostat	•
Frost free position	•

Technical data	PH15
Dimensions (H-L-D) in cm	44-86-13
Electronic temperature control	-
Tension - Power input	230V/500W-1000W-1500W
Electrical protection	IP24, 
Ambient thermostat	•
Frost free position	•



PH1

Colors  **Product Description**

- New radiant panel heater range PH
- PH1, with 1 power setting 1000W, ambient thermostat with frost protection function
- Protected against water splashes IP 24
- Cord storage facility
- Possibility of free standing and wall mounted use
- Useful handgrip for easy carriage
- Double electrical insulation against shocks: does not need an earth plug and socket



PH15

Colors  **Product Description**

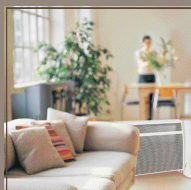
- New radiant panel heater range PH
- Protected against water splashes IP 24
- With 3 power settings (500W, 1000W, 1500W), ambient thermostat with frost protection function
- Cord storage facility
- Possibility of free standing and wall mounted use
- Useful handgrip for easy carriage
- Double electrical insulation against shocks: does not need an earth plug and socket

**Plus**

**Radiant heating system:** More body comfort, energy saving, better diffusion of heat.



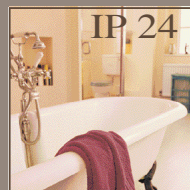
**Free standing:** Possibility of free standing and wall mounted use.



**Wall mountable:**



**IP 24:** Splash water proved IP 24.



**Cord storage facility:** Supply cord winding system.



**Handgrip:** Useful handgrip for easy carriage.



*radiant panel heaters*